

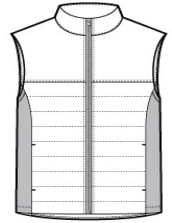
PORT AUTHORITY.

Port Authority® Collective Insulated Vest. J903

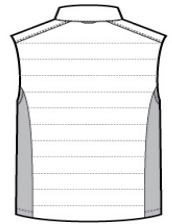


Insulation and stretch soft shell side panels make this vest a versatile, flattering and cozy cold-weather layer.

- Can be zipped in and secured by snap attachments inside an outer Collective layer
- 100% polyester woven shell
- 100% polyester knit bonded to a water-resistant film insert and a 100% polyester microfleece lining at side panels and under arms
- 100% polyester printed lining with insulation behind the outer woven shell
- Slightly longer length
- Zip-through cadet collar
- Molded center front zipper
- Stretch side panels
- Open front pockets
- Port Pocket™ for easy embroidery access
- Open hem



front

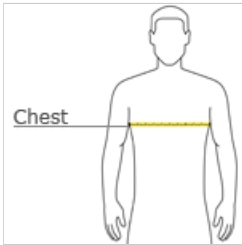


back

CARE INSTRUCTIONS

Machine wash cold with like colors; do not use fabric softener; tumble dry low; remove promptly; only non-chlorine bleach when needed; cool iron if necessary; do not dry clean.

HOW TO MEASURE



CHEST WIDTH

Measure under the arm and around the fullest part of the chest with arms down, keeping tape horizontal.

SIZE CHART

	XS	S	M	L	XL	2XL	3XL	4XL
Chest	32-34	35-37	38-40	41-43	44-46	47-49	50-53	54-57

COLOR INFORMATION



Deep Black
PMS NTR BLACK C



Graphite
PMS 7540C



Gusty Grey
PMS COOL GRAY
8C