

**PORT AUTHORITY.**

**Port Authority® Ladies Sweater Fleece Vest L236**

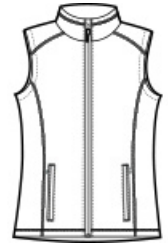


The comfort of a sweater joins the unbeatable warmth of fleece in these modern styles. Contrast binding at the pockets heightens the visual appeal.

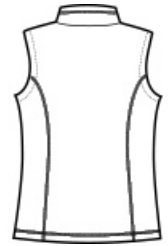
- 8.8-ounce, 100% polyester sweater fleece
- Twill-taped neck
- Reverse coil zipper
- Chin guard
- Full-length interior storm flap
- Front reverse coil zippered pockets with binding trim
- Knotted zipper pulls

**CARE INSTRUCTIONS**

Machine was cold. Gentle cycle with like colors. Non chlorine bleach when needed. Tumble dry low. Remove promptly. Do not iron.

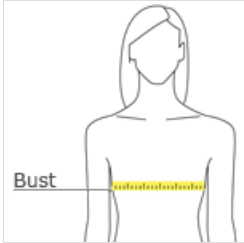


front



back

**HOW TO MEASURE**



**BUST**  
Measure under the arm and around the fullest part of the bust with arms down, keeping tape horizontal.

**SIZE CHART**

	XS	S	M	L	XL	XXL	3XL	4XL
Size	2	4/6	8/10	12/14	16/18	20/22	24/26	28/30
Bust	32-34	35-36	37-38	39-41	42-44	45-47	48-51	52-55

**COLOR INFORMATION**



Black Heather  
PMS NTR BLACK C



Grey Heather  
PMS 424C



Medium Blue  
Heather  
PMS 7692C