



# Nike Dri-FIT Micro Pique 2.0 Polo NKDC1963



**Tall sizes available in select colors: Anthracite, Black, Cool Grey, Game Royal, Gym Blue, Navy, University Red, Valor Blue, White**

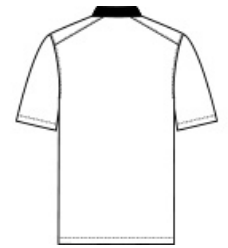
The best-selling Nike polo just got better. Still engineered from soft, stretchable micro pique fabric, the Nike Dri-FIT Micro Pique 2.0 Polo is now 5 styles strong. It delivers unparalleled comfort with Dri-FIT moisture management technology and features updated design lines and fit. Flat knit collar and three-button placket. Rolled-forward shoulder seams, open hem sleeves and open hem. White or black pearlized buttons selected to complement the shirt color. Contrast Swoosh logo is embroidered on the left sleeve. Made of 4.3-ounce, 100% polyester Dri-FIT fabric.

**CARE INSTRUCTIONS**

Machine Wash Cold. Wash Inside Out. Wash With Like Colors. Do Not Use Softeners. Do Not Use Bleach. Tumble Dry Low. Do Not Iron. Do Not Dry Clean.

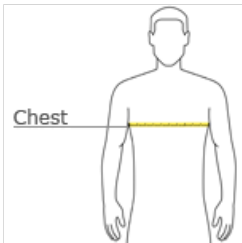


front



back

**HOW TO MEASURE**



**CHEST WIDTH**

Measure under the arm and around the fullest part of the chest with arms down, keeping tape horizontal.

**SIZE CHART**

|       | XS    | S         | M         | L     | XL        | 2XL            | 3XL         | 4XL   | LT    | XLT       | 2XLT          | 3XLT      | 4XLT  |
|-------|-------|-----------|-----------|-------|-----------|----------------|-------------|-------|-------|-----------|---------------|-----------|-------|
| Chest | 32-35 | 35-37 1/2 | 37 1/2-41 | 41-44 | 44-48 1/2 | 48 1/2 -53 1/2 | 53 1/2 - 58 | 58-63 | 41-44 | 44-48 1/2 | 48 1/2-53 1/2 | 53 1/2-58 | 58-63 |

**COLOR INFORMATION**

|                        |                          |                         |                               |                          |                           |                           |                          |                       |                         |                   |
|------------------------|--------------------------|-------------------------|-------------------------------|--------------------------|---------------------------|---------------------------|--------------------------|-----------------------|-------------------------|-------------------|
|                        |                          |                         |                               |                          |                           |                           |                          |                       |                         |                   |
| Anthracite<br>PMS 432C | Black<br>PMS NTR BLACK C | Blue Tint<br>PMS 9403C  | Brilliant Orange<br>PMS 1655C | Cool Grey<br>PMS 424C    | Court Purple<br>PMS 7680C | Game Royal<br>PMS 661C    | Gorge Green<br>PMS 2411C | Gym Blue<br>PMS 294C  | Lucid Green<br>PMS 340C | Mint<br>PMS 3248C |
|                        |                          |                         |                               |                          |                           |                           |                          |                       |                         |                   |
| Navy<br>PMS 296C       | Team Red<br>PMS 188C     | Tidal Blue<br>PMS 7468C | University Red<br>PMS 200C    | Urban Lilac<br>PMS 2078C | Valor Blue<br>PMS 659C    | Varsity Maize<br>PMS 123C | Vivid Pink<br>PMS 205C   | White<br>PMS NO MATCH |                         |                   |